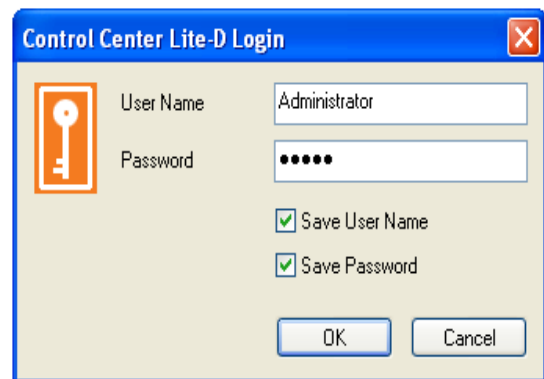
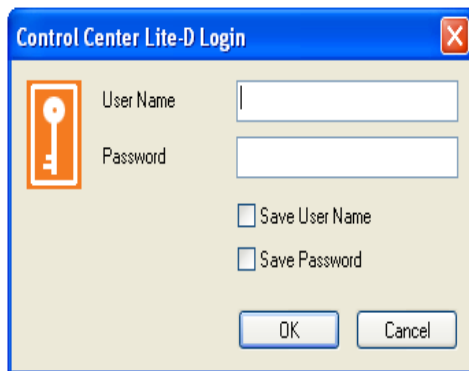


1.0 Where & How to download the software?

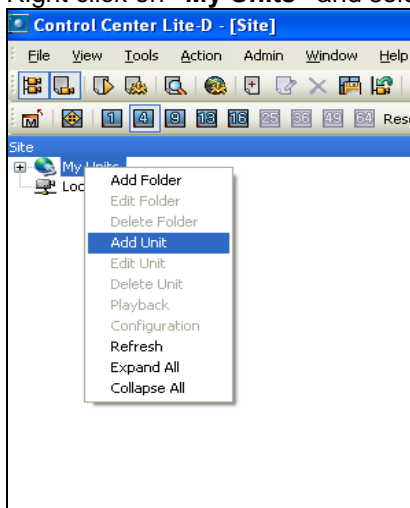
- 1.1 Go to <http://nurserycam.co.uk/download.htm>
- 1.2 Double click **Control Centre (Ver. 3.5)**
- 1.3 Chose “**SAVE**” and save it to your Desktop
- 1.4 When download is completed, it usually will ask you whether you want to install it, click “**RUN**”. If this does not happen automatically, then go to your desktop, you will see the file, double click to open and install the program
- 1.5 Select the language and click “**OK**”
- 1.6 Click “**I Agree**” to the License Agreement
- 1.7 Select all the components and click “**NEXT**”
- 1.8 Click “**BROWSE**” if you want to put it in a different folder, otherwise click “**INSTALL**”
- 1.9 Click “**NEXT**” all the way in The Installation Wizard until “**FINISH**”
- 1.10 Installation is then completed. You will find 3 new icons on your desktop now

2.0 How to view live images?

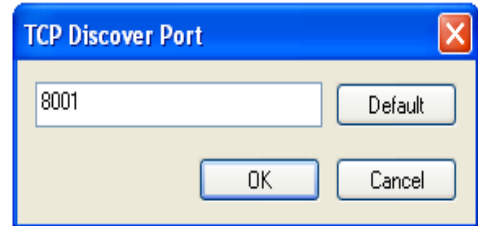
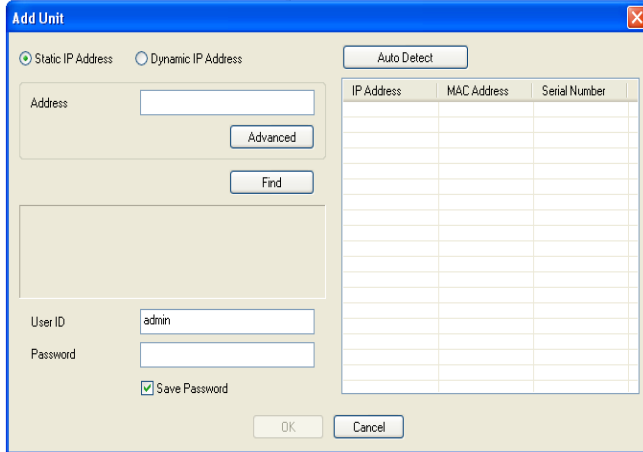
- 2.1 Open the Control Center Lite-D Monitor by double clicking
- 2.2 Fill in the details and select the “**Save User Name**” and “**Save Password**”
 - 3.2.1 User Name: **Administrator**
 - 3.2.2 Password: **admin**



- 2.3 Click “**OK**”
- 2.4 Right click on “**My Units**” and select “**Add Unit**”



2.5 Select the **“Static IP Address”** and fill in the details in the **“Add Unit”** box:



2.5.1 Address: Loccitane store’s IP address

2.5.2 Click on the **“Advanced”**

2.5.2.1 Fill in the **“TCP Discover Port”**

2.5.2.2 Click **“OK”**

2.5.3 Click on **“Find”**, and it will find your DVR automatically

2.5.4 Once the DVR has been found, fill in the details and select the **“Save Password”**:

2.5.4.1 User ID: **admin**

2.5.4.2 Password: **nurserycam888**

2.6 Click **“OK”**,

2.7 Click on the **DVR icon (beside + sign)**, you should able to view all the cameras. Click on the camera number to watch.

