

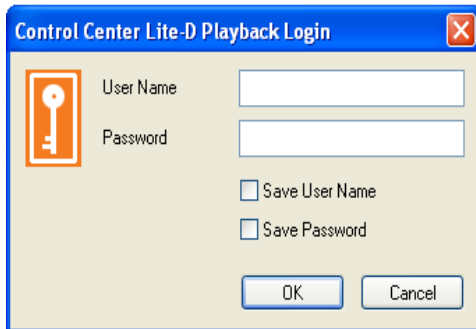
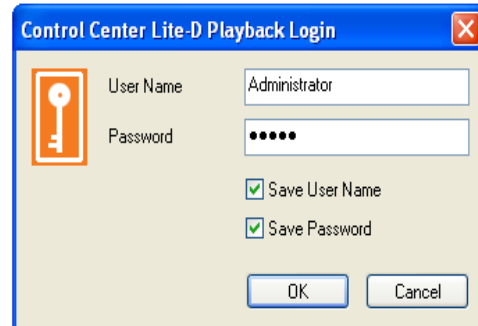
1.0 How to view playback?

1.1 Open the Control Center Playback Login by double clicking


1.2 Fill in the details and select the **“Save User Name”** and **“Save Password”**

4.2.1 User Name: **Administrator**

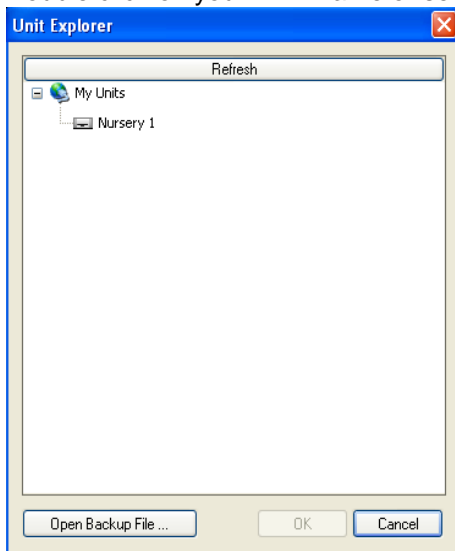
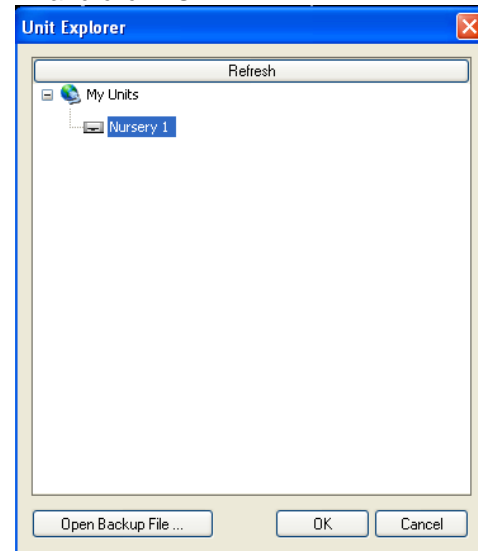
4.2.2 Password: **admin**

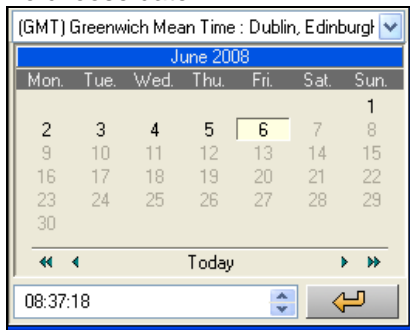
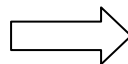
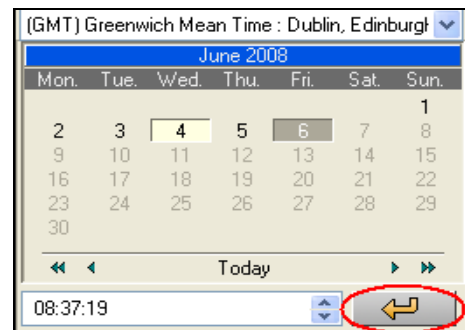
1.3 Click **“OK”**



1.4 Click on the  button at the top of the left hand corner to Connect

1.5 Double click on your DVR name or select your DVR and click **“OK”**

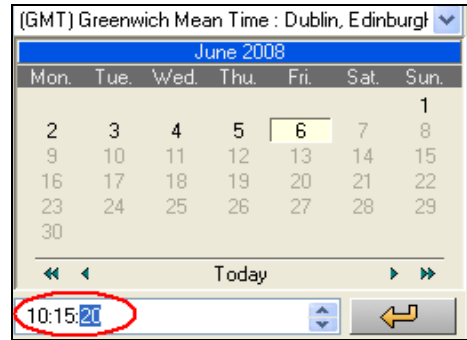
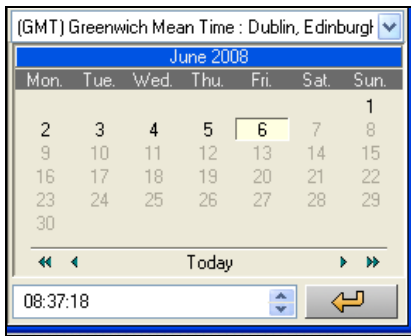
1.6 To choose date:

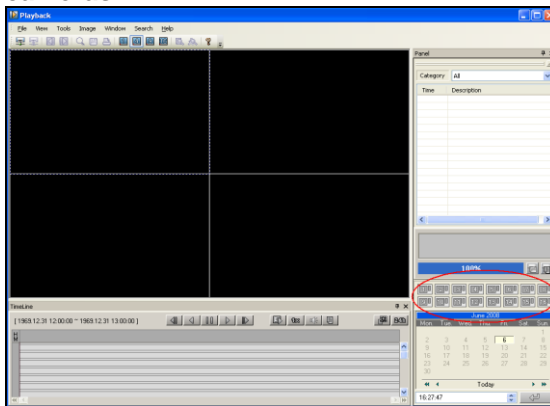
1.6.1 Click on the date which you wish to playback by using  or 

1.6.2 Click on the  button at the bottom right hand corner

1.7 To choose time:

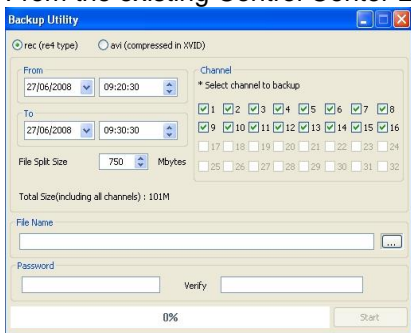


- 1.7.1 Enter the hour, minutes, and seconds that you want to playback.
- 1.7.2 Click on the button at the bottom right hand corner. You will see a black vertical line on the time you've chosen (for eg, on the screen above, the time 11.18am is selected)
- 1.7.3 Red indicates motion detected recording and blue indicates continuously recording during working hours
- 1.7.4 Click to playback
- 1.7.5 Click to pause or stop the playback
- 1.8 To choose camera:
 - 1.8.1 Click on the **"CH1-CH16"** button to select the cameras within the nursery
 - 1.8.2 **Blue "CH"** buttons indicate **selected cameras**, while **grey "CH"** buttons indicate **unselected cameras**

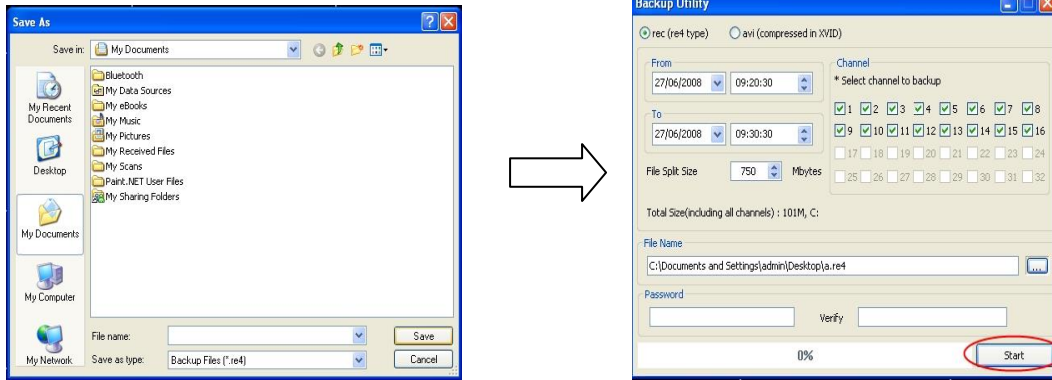


2.0 How to backup a recorded footage into a PC?

- 2.1 From the existing Control Center Lite-D Playback, click button to backup a recorded footage



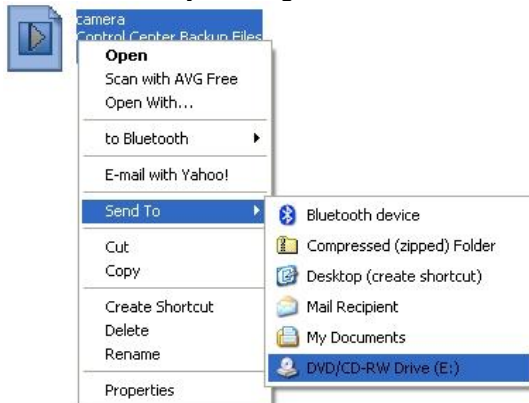
- 2.2 Choose your backup period (date and time) and channel (cameras)
- 2.3 Password is optional. Once you setup the password, you'll required to key in the password again to view the backup file
- 2.4 Click button to open file name



- 2.5 Select the file that you want to save to, key in the file name and click **“SAVE”**
- 2.6 Click **“START”**

3.0 How to burn a recorded footage from a PC to a CD?

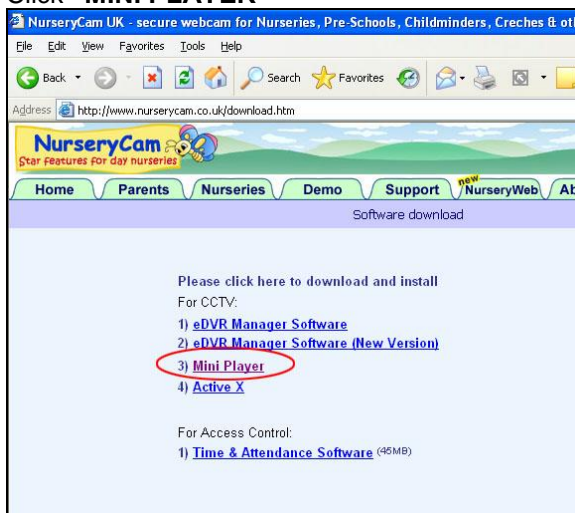
- 3.1 If have own burning software (for examples: Roxio, Gear etc), please use the programme to burn
- 3.2 If don't have any burning software:



- 3.2.1 Right click the file that you have saved
- 3.2.2 Select **“SEND TO”**
- 3.2.3 Click on your RW drive

4.0 How to play the CD at third party's PC?

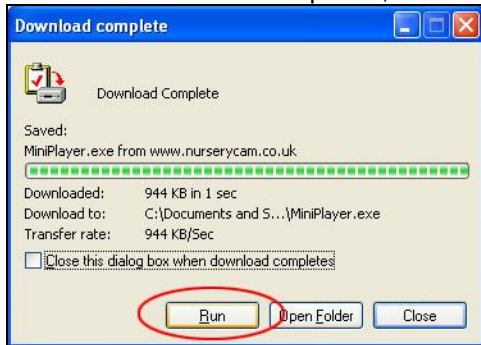
- 4.1 Go to <http://www.nurserycam.co.uk/download.htm> to download the Mini Player program
- 4.2 Click **“MINI PLAYER”**



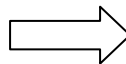
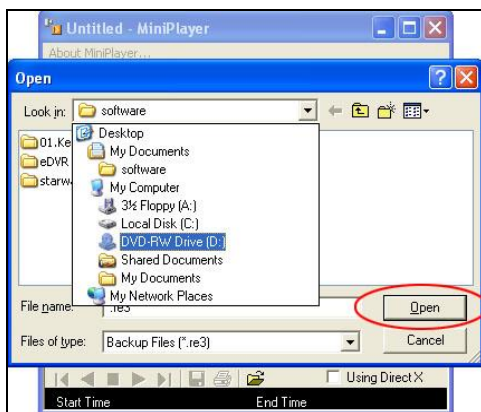
- 4.3 Click **“SAVE”** and save it to your Desktop



4.4 When download was completed, click “RUN” and install the programme





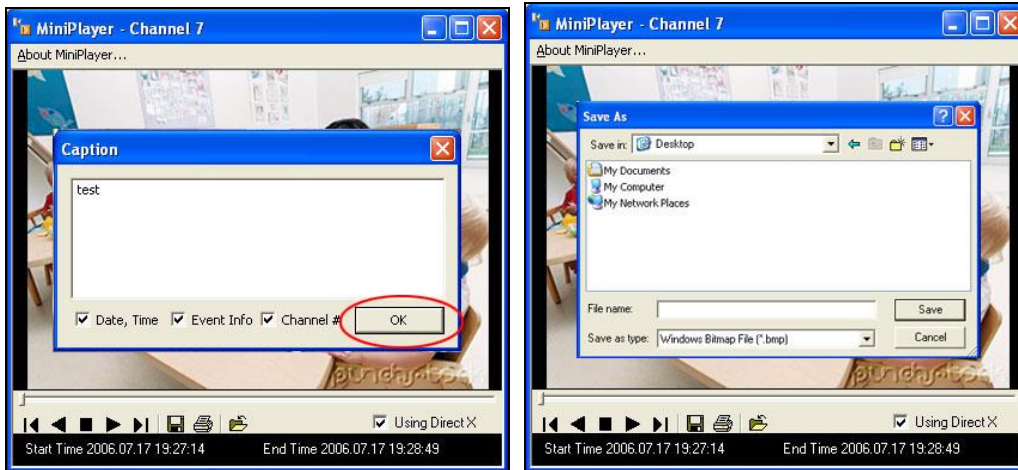
4.5 Click “RUN” again (Please take note: always **UNBLOCK** this programme)



4.6 Select file to open and click “OPEN”

- 4.6.1 Click ► to play forward
- 4.6.2 Click ■ to stop
- 4.6.3 Click ►| to step forward
- 4.6.4 Click |◀ to step backward
- 4.6.5 Click ◀ to play backward
- 4.6.6 Select “Using DirectX” to have a better quality of video clip

4.7 Click  to save an incident image as snapshot or click  to print the image directly (Please take note: you need to STOP at the image you wanted)



- 4.7.1 Type text in the text box
- 4.7.2 Select "Date, Time", "Event Info" and "Channel #" to show the selected details on the snapshot
- 4.7.3 Click "OK"
- 4.7.4 Type in file name and save it into the folder